

279 (Carlotta)

A Tempo

(Piangi)
mands are re - ject - ed. Hon - our

(Andre & Firmin)

(Raoul)
Who'd be - lieve a Di - va hap - py to re - lieve a cho - rus girl who's gone and

(Meg)
mands are re - ject - ed. Christ - ine

(Giry)
mands are re - ject - ed. Christ - ine

214 (Carlotta)

Musical staff for Carlotta at measure 214, showing a vocal line in G major with lyrics: O for - tu - na - ta

(Piangi)

Musical staff for Piangi at measure 214, showing a vocal line in G major with lyrics: must be pro - tec - ted.

(Andre & Firmin)

Musical staff for Andre & Firmin at measure 214, showing a vocal line in G major with lyrics: slept with the pat - ron? Raoul and the sou - brette en - twined in love's du - et al -

(Raoul)

Musical staff for Raoul at measure 214, showing a vocal line in G major with lyrics: must be pro - tec - ted.

(Meg)

Musical staff for Meg at measure 214, showing a vocal line in G major with lyrics: must be pro - tec - ted.

Piano accompaniment for measures 214-216, including parts for Flute (Fl.) and Clarinet (Cl.).

217 (Carlotta)

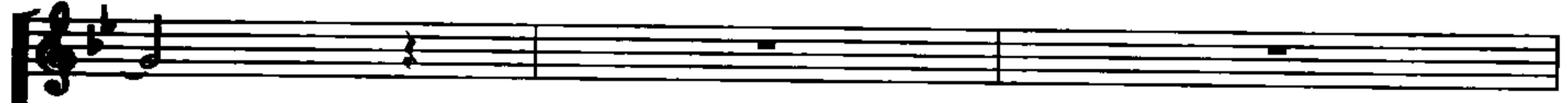
Musical staff for Carlotta at measure 217, showing a vocal line in G major with lyrics: Non an - cor ab - an - don - a - ta.

(Andre & Firmin)

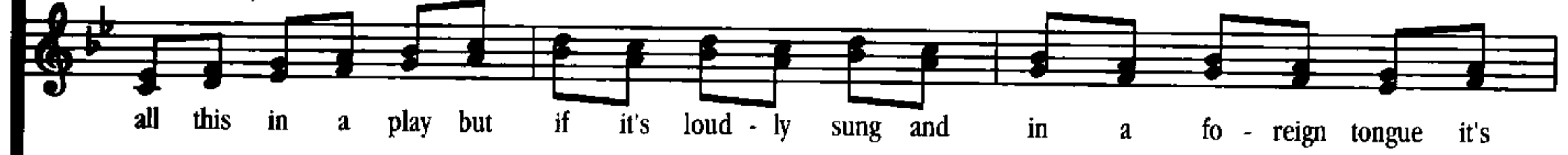
Musical staff for Andre & Firmin at measure 217, showing a vocal line in G major with lyrics: though he may de - mur he must have been with her. You'd ne - ver get a - way with

Piano accompaniment for measures 217-219, including parts for Flute (Fl.) and Clarinet (Cl.).

229 (Carlotta)



(Andre & Firmin)



RAOUL



GIRY



Rall.

CARLOTTA

223

The
PIANGI

(Andre & Firmin)

The

(Raoul) just the sort of sto - ry au - dien - ces a - dore in fact a per - fect op - era.

And in box five a new game will be - gin

MEG

(Giry)

But if his curse is on this

win.

For if his curse is on this

ww
Vln/Vla

vcl.

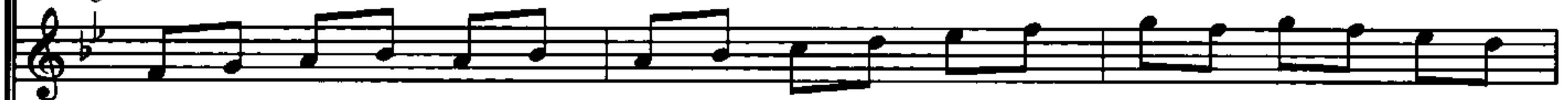
A Tempo

227 (Carlotta)



stress that falls up - on a fa - mous Pri - ma Don - na; Ter - ri - ble dis - eas - es

(Piangi)



stress that falls up - on a fa - mous Pri - ma Don - na; Ter - ri - ble dis - eas - es

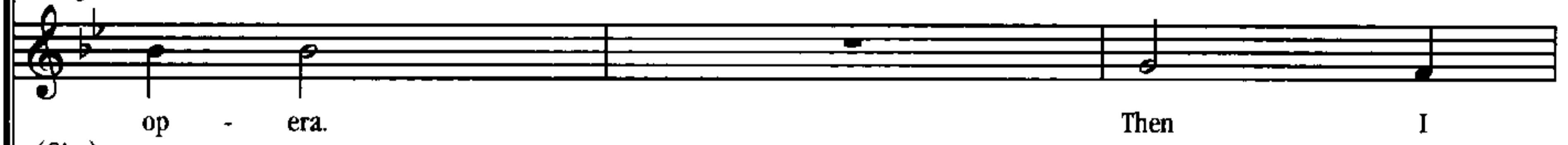
stress that falls up - on a fa - mous Pri - ma Don - na; Ter - ri - ble dis - eas - es

(Andre & Firmin)(Both)



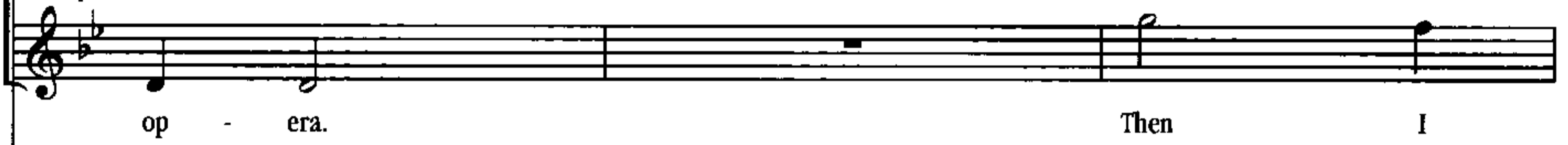
Pri - ma Don - na the world is at your

(Meg)



op - era. Then I

(Giry)



op - era. Then I



Piano accompaniment for the vocal parts, featuring chords and bass lines.

230 (Carlotta)

(Piangi) coughs and colds and sneez - es! Still the dry - est throat will reach the high - est note in

coughs and colds and sneez - es! Still the dry - est throat will reach the high - est note in
(Andre + Firmin)

feet. A na - tion waits and with it hates to be
RAOUL

(Meg) Christ - ine plays the page - boy Car -

fear the out - come when you

(Giry) fear the out - come should you

233 (Carlotta) **Rall.**

Meno mosso

search of per fect op - era. Light up the stage with that
(Piangi)

search of per fect op - era. Light up the stage with that
(Andre & Firmin)

chea - ted _____ Light up the stage with that
(Raoul)

lot - ta plays the Count - ess. Light up the stage with that
(Meg)

once a - gain Light up the stage with that
(Giry)

dare to Light up the stage with that

p. *v*

Rall. The Phantom of the Opera

237 (Carlotta)

Musical staff for Carlotta, featuring a melodic line with a long note on 'Sing' and a fermata on 'once'.

(Piangi) age old rap - port. Sing Pri - ma Don - na once

Musical staff for Piangi, featuring a melodic line with a long note on 'Sing' and a fermata on 'once'.

age old rap - port. Sing Pri - ma Don - na once

(Andre & Firmin)

Musical staff for Andre & Firmin, featuring a melodic line with a long note on 'Sing' and a fermata on 'once'.

(Raoul) age old rap - port. Sing Pri - ma Don - na once

Musical staff for Raoul, featuring a melodic line with a long note on 'Sing' and a fermata on 'once'.

age old rap - port. Sing Pri - ma Don - na once

(Meg)

Musical staff for Meg, featuring a melodic line with a long note on 'Sing' and a fermata on 'once'.

age old rap - port. Sing Pri - ma Don - na once

(Giry)

Musical staff for Giry, featuring a melodic line with a long note on 'Sing' and a fermata on 'once'.

age old rap - port Sing Pri - ma Don - na once

Piano accompaniment for the scene, including chords and melodic fragments in both hands, with a double bar line and fermata at the end.

Pia mosso

237 (Carmen)

Musical staff for Carmen, featuring a series of quarter notes with a piano (p.) dynamic marking.

more.

(Piangi)

Musical staff for Piangi, featuring a series of quarter notes with a piano (p.) dynamic marking.

more.

(Andre & Firmin)

Musical staff for Andre & Firmin, featuring a series of quarter notes with a piano (p.) dynamic marking.

more.

(Raoul)

Musical staff for Raoul, featuring a series of quarter notes with a piano (p.) dynamic marking.

more.

(Meg)

Musical staff for Meg, featuring a series of quarter notes with a piano (p.) dynamic marking.

more.

(Giry)

Musical staff for Giry, featuring a series of quarter notes with a piano (p.) dynamic marking.

more.

PHANTOM [Spoken] So, it is to be war between us.

Piano accompaniment for the Phantom's spoken line, consisting of a complex chordal texture in the right hand and a simple bass line in the left hand.

If these demands are not met, a disaster

Piano accompaniment for the first part of the Phantom's line, corresponding to the text "If these demands are not met, a disaster".

beyond imagination will occur!

Piano accompaniment for the second part of the Phantom's line, corresponding to the text "beyond imagination will occur!".

253

CARLOTTA

Musical staff for Carlotta, featuring a treble clef, a key signature of one flat, and a 2/4 time signature. The staff contains a melodic line with a fermata over the first measure and a dynamic marking of *p*.

once more _____

PIANGI

Musical staff for Piangi, featuring a treble clef, a key signature of one flat, and a 2/4 time signature. The staff contains a melodic line with a fermata over the first measure and a dynamic marking of *p*.

once more _____

ANDRE + FIRMIN

Musical staff for Andre + Firmin, featuring a treble clef, a key signature of one flat, and a 2/4 time signature. The staff contains a chordal accompaniment with a fermata over the first measure and a dynamic marking of *p*.

once more _____

RAOUL

Musical staff for Raoul, featuring a treble clef, a key signature of one flat, and a 2/4 time signature. The staff contains a melodic line with a fermata over the first measure and a dynamic marking of *p*.

once more _____

MEG

Musical staff for Meg, featuring a treble clef, a key signature of one flat, and a 2/4 time signature. The staff contains a melodic line with a fermata over the first measure and a dynamic marking of *p*.

once more _____

GIRY

Musical staff for Giry, featuring a treble clef, a key signature of one flat, and a 2/4 time signature. The staff contains a melodic line with a fermata over the first measure and a dynamic marking of *p*.

once more _____

Piano accompaniment for the scene, consisting of a grand staff with treble and bass clefs. The right hand features a complex chordal texture with a fermata over the first measure, while the left hand provides a simple harmonic accompaniment.